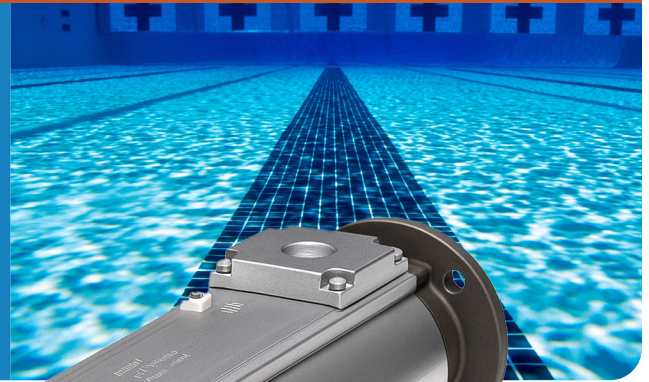




# POOL AND SPA HEAT EXCHANGERS

## BUILT TO LAST IN THE HARSHTEST POOL ENVIRONMENTS



Shell & Tube Design with Rubber Headers

Multiple Sizes & Fitting Options

UV & Chemical Resistant CPVC Flanges

Universal Mounting Rail

Anodized 6063 T5 Aluminum Shell

## KEY FEATURES & ADVANTAGES

### Isolate boiler from exposure to treated water

prolong boiler and plumbing life and reduce total system maintenance costs

### High corrosion resistance to treated water

prolongs cooler life and reduces cooler maintenance cost

### High heat transfer efficiency, compact cooler size

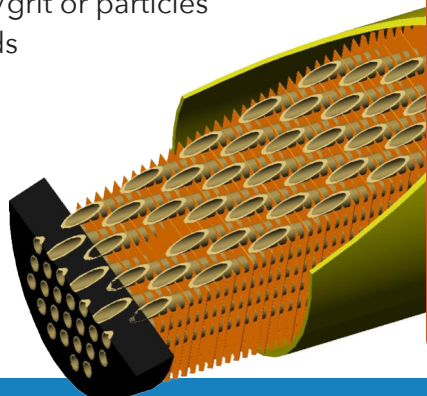
Easy to be packaged to a limited space

### Advantages over plate coolers

- Longer life and can be easily cleaned/serviced
- Will not foul with sand/grit or particles in pool or heating fluids

### Variety of sizes

Can be tailored to fit different applications



## TECHNICAL SPECIFICATIONS

Tube Cores	CuNi (90/10), Ti
Shell	Extruded 6063 T5 Anodized Aluminum
Headers	Rubber Construction, Compression Fit
Flanges	UV & Chemical Resistant CPVC
Passes	Robust 1 Pass Design
Sizes	4in and 6in diameter, varying length and flange/adaptor options

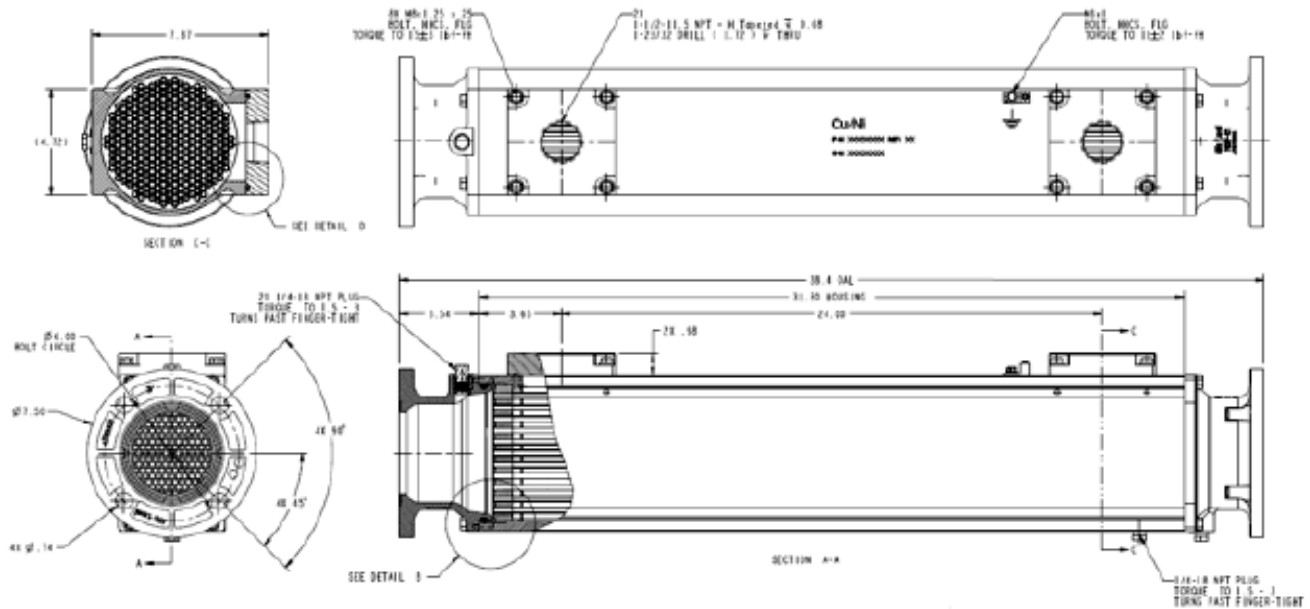
### TSM Rubber Tube Sheet (RTS) Technology

- Cooling core is press fit into rubber headers with 200°C (400°F) performance rating
- Higher reliability and corrosion resistance than brazed heat exchangers
- RTS design can handle large temperature swings and environmental shock or vibration far better than brazed shell or plate coolers

Ready to upgrade? Let's talk specs and savings—call now to speak with an expert

# Built to Outperform and Outlast

## Engineered for maximum heat transfer and minimal maintenance



### 4" Spa Models

- Tube Bundle 4" X 18" long
- CuNi or Ti core options
- 2.5" X 4" Fittings Standard

### 6" Models

- Tube Bundle: 6" x 28" long
- CuNi or Ti core options
- 2" X 3", 2.5" X 4" and 3" x 6" Standard Fitting options

\* Mechanical drawing of 4" spa model

## SPECIFICATIONS

### Mechanical

- Burst strength: tube side: 130 PSI; shell side: 360 PSI
- Mechanical fatigue: tube side: 45 PSI; shell side: 100 PSI
- Normal design pressure: Tube side: 45 PSI
- CuNi or Ti all components in liquid contact

### Size & Performance - 6" Model

- 6" x 28" (cooling core size)
- Overall heat transfer: validated up to 1,300,400 BTU/hr (380 kW)
- Pool water flow rate: validated up to 365 GPM (1,375 LPM)

### Size & Performance - 4" Model

- 4" x 18" (cooling core size)
- Overall heat transfer: validated up to 440,580 BTU/hr (129 kW)
- Pool water flow rate: validated up to 100 GPM (380 LPM)



1-800-799-7237 • [tsmus.com](http://tsmus.com)

**CONTACT US TODAY to get a quote or custom recommendation for your next pool system upgrade**

**TSM** Thermal Solutions Manufacturing, Inc.