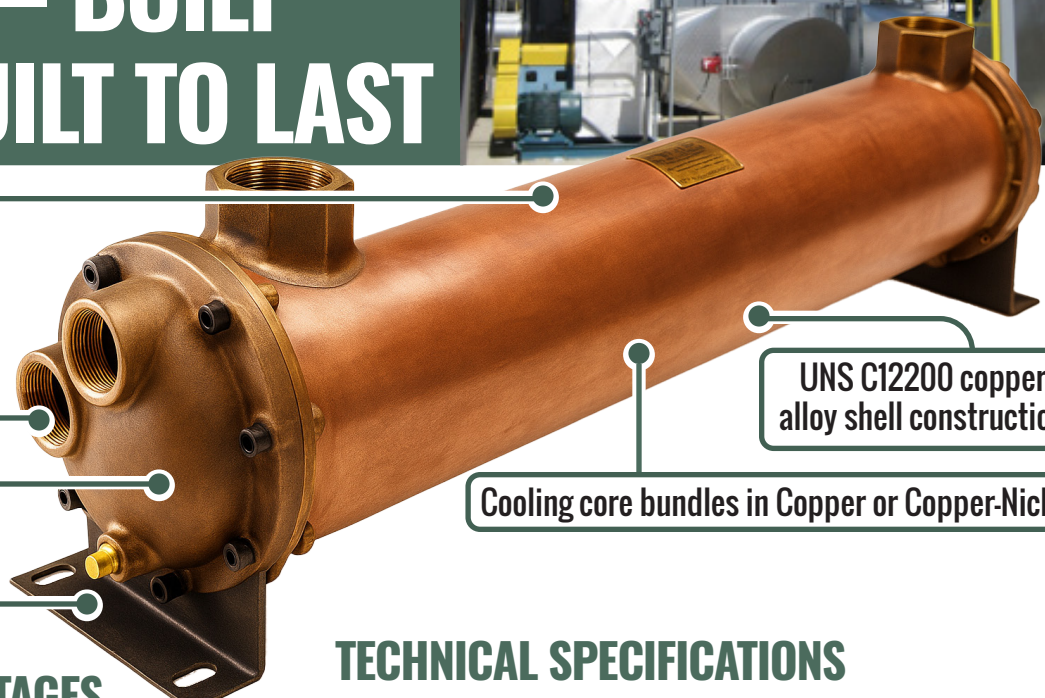




# BAS HEAT EXCHANGERS

## ENGINEERED FOR INDUSTRY – BUILT TOUGH, BUILT TO LAST



Shell and Tube Construction with 1-, 2- and 4-pass options

Cast iron bonnet construction

Standard and Custom Fittings options

UNS C12200 copper alloy shell construction

Cooling core bundles in Copper or Copper-Nickel

### KEY FEATURES & ADVANTAGES

#### High Corrosion Resistance:

- Copper or optional CuNi cooling bundles and CN12200 copper shell
- All fluids involved in heat exchange are in contact with corrosion resistant materials

#### Fully configurable:

- Any combination of diameter and length can be ordered within specifications (see table)
- Single pass cooling available on all models
- 2-pass and 4-pass cooling available on select models
- Cooling core materials and end-cap options for enhanced corrosion resistance (optional)
- Large diameter 5/8" tubing optional for 'dirty coolant' applications

#### Robust and reliable all-copper construction

- Less risk of brazing failure due to temperature expansion/contraction
- Non-sparking, non-magnetic
- Lighter weight to support mounting and mobility requirements

### TECHNICAL SPECIFICATIONS

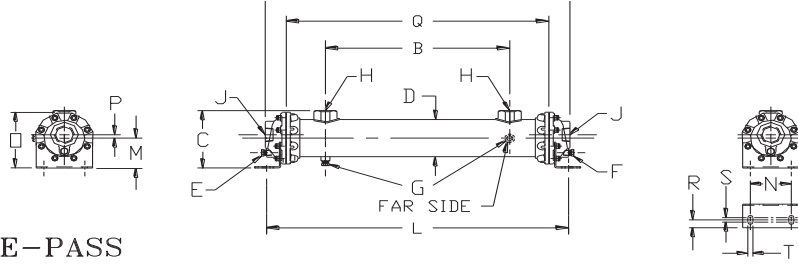
<b>Bundle Material</b>	Copper Standard, CuNi (90/10)
<b>Core Diameter and Tube Sizes</b>	5", 6", 8" BAS: 0.375 (3/8" OD) 0.625 (5/8" OD)
<b>Lengths</b>	14" to 72"
<b>Bonnets (End-Caps)</b>	Cast Iron - Standard, Bronze - Option
<b>Passes</b>	Single Pass, 2-Pass, 4-Pass

### INDUSTRIAL COOLING APPLICATIONS

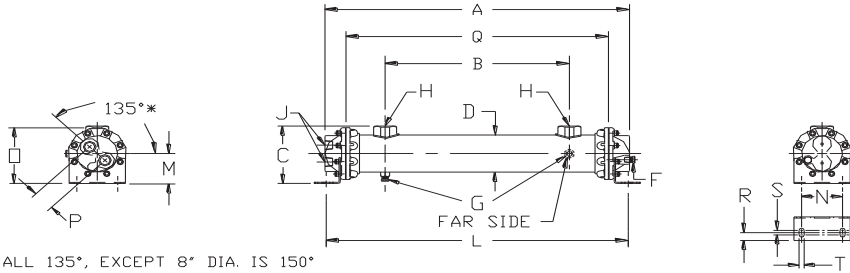
- Irrigation
- Oil & Gas production
- Fermentation and Brewery
- Process gases and condensation
- Oil and transmission
- Chemical processes
- Manufacturing processes

# Rugged by Design. Relentless in Performance

## Built tough to cool fast and run longer

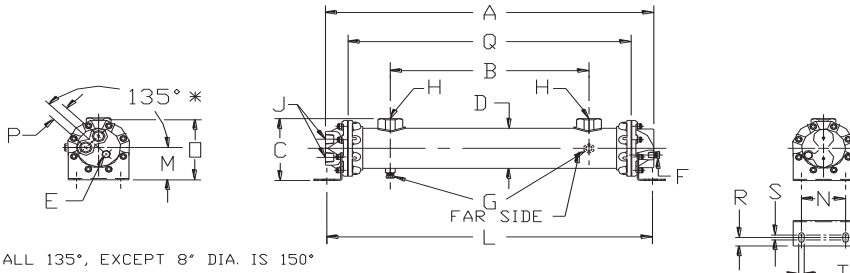


SINGLE-PASS



\* - ALL 135°, EXCEPT 8" DIA. IS 150°

TWO-PASS



\* - ALL 135°, EXCEPT 8" DIA. IS 150°

FOUR-PASS

PRESSURE & TEMPERATURE RATINGS	
WORKING PRESSURE	
SHELL	150 PSI
TUBES	150 PSI
WORKING TEMPERATURE	250° F
TEST PRESSURE	
SHELL	250 PSI
TUBES	250 PSI

MATERIAL SPECIFICATIONS	
SHELL	COPPER OR BRASS
TUBES	COPPER *
TUBESHEETS	COPPER
BAFFLES	COPPER
END HUBS	COMPOSITION BRONZE
END BONNETS	CAST IRON **
MOUNTING BRACKET	STEEL

\* CUPRO-NICKEL ALSO AVAILABLE  
\*\* BRONZE ALSO AVAILABLE

MAXIMUM FLOW RATES IN GPM				
SERIES	SHELL	TUBE		
		50	85	180
BAS-5xx	50	85	50	38
BAS-6xx	85	180	85	50
BAS-8xx	180	350	180	85

### HEAT EXCHANGER DIMENSIONS - INCHES

Model Number	Overall Length			Shell Side Connections Center Distance	Overall Height	Shell Diameter	1st Tubeside Drain Size #	2nd Tubeside Drain Size	Shellside Drain Size	Shellside Connections	Tubeside Connections			Bolt Centers - Length	Height to Center	Bolt Centers - Width	Height to End Caps	Tubeside Connections - Center Distance			Shell Length - Less End Caps	Bolt Hole to End of Bracket	Hole Length - Center to Center	Bolt Hole Width	Effective Surface Area (A) Sq. Ft.		Number of Tubes per Bundle					
	A		B								J							P							Q	R	S	T	1/4" Tubes	3/8" Tubes	1/4" Tubes	3/8" Tubes
	1-Pass	2-Pass	4-Pass								1-Pass	2-Pass	4-Pass					1-Pass	2-Pass	4-Pass												
BAS514-37-3-*	19.50	18.56	18.56	9.00	7.81	5.13	3/8-NPT	3/8-NPT	3/8-NPT	1-1/2 NPT	1-1/2	2-1/2	1-1/2	1-1/2	1-1/2	17.50	3.88	4.00	7.75	0.00	3.75	2.69	14.50	1.06	0.88	0.50	9.2	80				
BAS524-37-3-*	29.50	28.56	28.56	19.00							2-1/2	3-1/2	2-1/2	2-1/2	27.50	15.7				80												
BAS536-37-3-*	41.50	40.56	40.56	31.00							39.50	23.6	80																			
BAS624-37-3-*	30.00	29.62	29.81	18.25	8.75	6.13	3/8-NPT	3/8-NPT	3/8-NPT	2-NPT	3-	2-	1-1/2	1-1/2	29.31	4.56	5.00	8.43	0.00	3.06	3.00	24.50	0.88	0.88	0.50	22.8	116					
BAS636-37-3-*	42.00	41.62	41.81	30.25							41.31	34.2	116																			
BAS648-37-4-*	54.00	53.62	53.81	42.25							53.31	45.6	116																			
BAS660-37-3-*	66.00	65.62	65.81	54.25							65.31	57.0	116																			
BAS824-37-6-*	31.31	29.50	29.50	17.00	11.38	8.13	3/8-NPT	3/8-NPT	3/8-NPT	3-NPT	4-	2-1/2	2-	28.19	6.00	7.00	11.06	0.00	4.75	4.00	24.50	1.06	0.94	0.56	42.4	216						
BAS836-37-3-*	43.31	41.50	41.50	19.00							40.19	63.6	216																			
BAS848-37-3-*	55.31	53.50	53.50	41.00							52.19	84.8	216																			
BAS860-37-4-*	67.31	65.50	65.50	53.00							64.19	106.0	216																			
BAS872-37-4-*	79.31	77.50	77.50	65.00							76.19	127.3	216																			

\* - NUMBER OF PASSES TO BE SPECIFIED. "1" DENOTES 1 PASS, "2" DENOTES 2 PASS, "4" DENOTES 4 PASS.

# - NOT AVAILABLE ON 2-PASS UNITS.

## - NOT AVAILABLE ON THESE 4-PASS UNITS.

Our product and applications experts can assist you in selecting the best BAS option for your heat exchange requirements- call us TODAY!

1-800-799-7237 • tsmus.com

